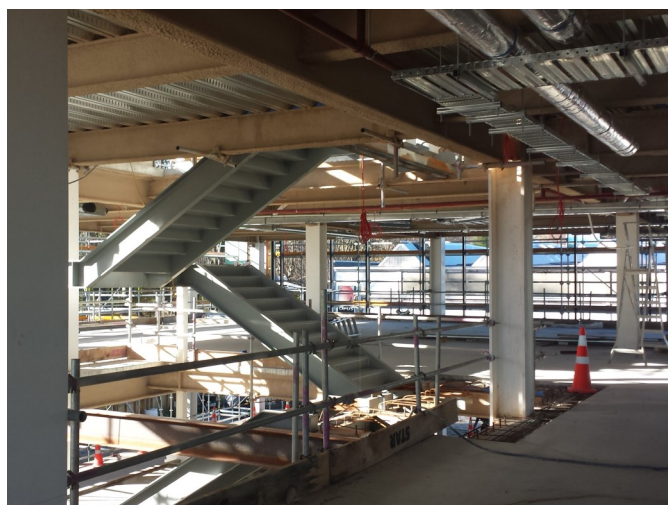


FIREPROOFING PRODUCT CASE HISTORY

OPUS INTERNATIONAL — CHRISTCHURCH



PROJECT: New Office Building, Opus International
LOCATION: 12 Moorhouse Ave, Christchurch
APPLICATOR: Topcoat Specialist Coatings
DATE: May 2015
SALESPERSON: Rene' Hill
SUBSTRATE: Mild steel
PROJECT SIZE: 2500m²



EXPOSURE

Interior exposed & interior enclosed fireproofing (60 minute fire rating first floor, 30 minute floors above).

INTERIOR EXPOSED

SURFACE PREPARATION

Degrease to SSPC-SP1 to remove all soluble contaminants.
Abrasive blasting to SSPC-SP10, Class Sa 2 ½.
Primer: Carboguard 504 @ 75 µm DFT.
Intumescent Coating: FX2002 @ DFT as contained in the material schedule.

INTERIOR CONCEALED

SURFACE PREPARATION

Degrease to SSPC-SP1 to remove all soluble contaminants.
SP2 hand or SP3 power tool clean the surface to remove all loose milscale, rust and weakly adhering surface material.
Cementitious fireproofing: Southwest Type 5GP @ DFT as contained in the material schedule.